

# Getting Started with CorelDRAW Graphics Suite X3

## Worksheet # 9

### Image Adjustment Lab

Instructions: Number the steps the correct sequence.

1 Rotatethe image if necessary

2 Adjust the zoom level and pan

3 Set the preview mode

4 Use Automatic Correction

5 Correct the Color Cast

6 Adjust overall lighting

7 Fine tune light levels

8 Create a Temporary Snapshot

9/10 Select the desired result

9/10 Undo All Changes

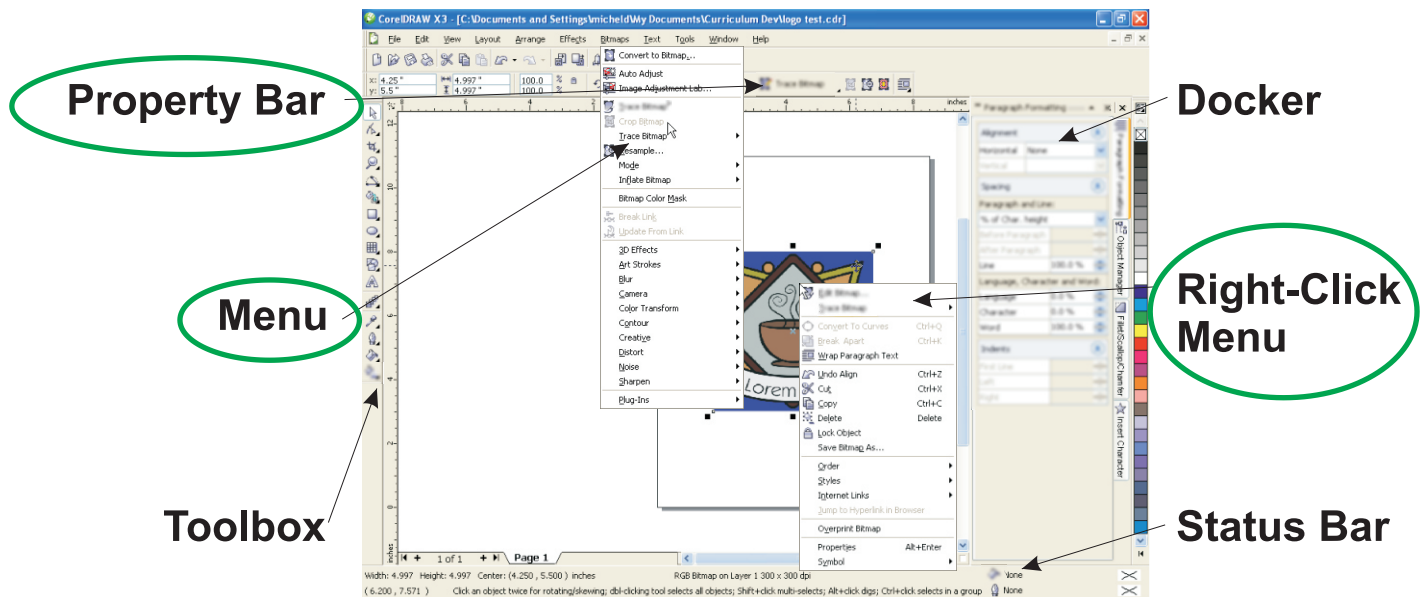
11 Accept the selected result and return to the application

Instructions: Connect the description correct adjustment slider

Adjustment Slider	Description
Temperature: 5000	Darkest areas of the image
Tint:	Magenta or Green levels
Saturation:	Lightest areas of the image
Brightness:	Vividness of Color
Contrast:	Orange or Blue levels
Highlights:	Lightness of the entire image
Shadows:	Difference between light and dark
Midtones:	Midrange tones of the image

## Starting Photo-Paint X3

Instructions: Circle the possible methods for starting the Photo-Paint application.



## Starting Photo-Paint X3

Instructions: Connect the tool on the right to the effect on the left. The first connection is made for you.

